

Wilhoit Propane Co.

Established 1946

63 Court Square Warrenton, Georgia 706-465-2243



Please,
SILENCE YOUR CELL PHONE NOW

CONCESSIONS

Open before show & during intermission
RESTROOMS ARE LOCATED NEAR CONCESSIONS

THANK YOU SPONSORS!

City of Warrenton

Thank you for giving us a home

Wilhoit Propane Co.

Established 1946

63 Court Square Warrenton, Georgia 706-465-2243



Knox & Swan
ATTORNEYS

*The McDuffie
Progress*
"Serving McDuffie County Since 1898"

Andersons Market Cricket Wireless Farmers State Bank
McMichael Land & Timber Queensborough National Bank & Trust
State Bank & Trust Company Thomson Chrysler Dodge
Kenneth & Kathy Usry Regional Open MRI Watson & Knox, Inc.

Dozier Heating & Air RA Dudley Nurseries Family Eye Care Associates
McDuffie Feed & Seed White Columns Inn

Previous ACT, sr productions

2015 Drama at the Diner
2016 The Somewhat True Tale of Robin Hood

Previous ACT Productions

Big bad + Murder by the Book + Romeo & Juliet
Comedy Through the Ages + Godspell + And Then There Were None
Night @ the CC + Twelfth Night + Annie
The Lion, The Witch, and The Wardrobe + Laugh Your Head Off
Taming of the Shrew + Mulan + Little Women
As You Like It + Mary Poppins + Laugh In
Something Wicked This Way Comes + Much Ado About Nothing

Cinderella Auditions August 14th & 15th!

VISIT US ONLINE

AreaChildrensTheatre.org



MEET THE DIRECTOR



Mycala Hilson

I am so honored to have been able to direct this summer's ACT Sr. production! I have been in numerous ACT productions in the past, but eventually the distance of college pulled me away from the ACT cast. However, I am back this summer!

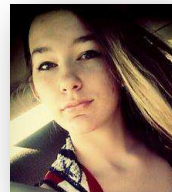
This is my first time working as a director and it has been an unforgettable experience. I have been blessed with a wonderful cast to work with and they have worked very hard. I am so proud of them and so excited for this show.

MEET THE PRODUCTION CREW



Sarah Letteer (Assistant Director) I am a high school graduate preparing to attend Agnes Scott College in the fall. Writing and theatre are my greatest loves, and my extensive ACT experience has helped me understand both of those at a new level.

I look forward to returning to watch many future ACT productions.



Elizabeth Wilkerson (Stage Manager) I am a 17yo homeschooled student. I will be a senior this year, and have enrolled at Augusta Tech while I try to figure out what I want to do with my life. I have participated in ACT since 2011, and this will be my third ACT Sr.

Lights and Sound: Jeffrey Fowler and Cindy Rivers

Makeup: Lauren Bentley and Elizabeth Wilkerson

SUM IT UP...

"Open your heart and your mind as we whisk you away to a small town in northern Maine for one very eventful Friday night. Watch this town's inhabitants as they experience love full force with all of its comforts and all of its sting. We, the cast, crew, and directional staff hope you will enjoy *Almost, Maine*, a play by John Cariani, comprising nine short plays that explore love and loss in the remote, mythical, and magical almost-town of *Almost, Maine*."

SCENE IT...

Prologue

-Angie Wilkerson and Shannon Bentley as Pete and Ginette

Scene 1: Her Heart

-Tori Wilkerson and Danny Roush as Glory and East

Scene 2: Sad and Glad

-Shannon Bentley, Jared Burk, and Elizabeth Wilkerson as Sandrine, Jimmy, and Waitress

Scene 3: That Hurts

-Jared Burk and Helena Holbrook as Steve and Marvalyn

Scene 4: Getting it Back

-Danny Roush and Elizabeth Wilkerson as Lendall and Gayle

INTERMISSION

Interlogue

-Angie Wilkerson as Pete

Scene 5: They Fell

-Danny Roush and Jared Burk as Randy and Chad

Scene 6: Where it Went

-Sarah Letteer and Danny Roush as Marci and Phil

Scene 7: Story of Hope

-Shannon Bentley and Jared Burk as Hope and Man

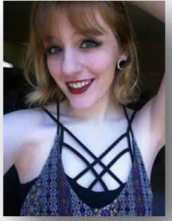
Scene 8: Seeing the Thing

-Danny Roush and Angie Wilkerson as Dave and Rhonda

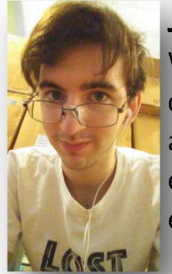
Epilogue

-Angie Wilkerson and Shannon Bentley as Pete and Ginette

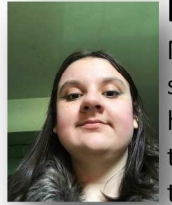
MEET THE CAST...



Shannon Bentley Shannon has been in ACTs I-XVIII and she directed last year's ACT Senior, The Somewhat True Tale of Robin Hood. She has also participated in two productions with the Washington Little Theater. Shannon's favorite thing about this play is the cast, whom she loves!



Jared Burk Jared has only been involved in Washington Little Theatre, in which he was the character Laurie in Little Women last summer as well as Dewey Jr. in Southern Fried Funeral. This is his first experience in ACT. One thing that Jared especially enjoys about this play scene 3's physical comedy.



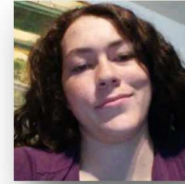
Helena Holbrook Helena became a part of Almost, Maine as one last hoorah before moving on to the next stage of her life, mainly to focus on her writing. She spent her high school years in one-act and joined ACT in 2015. She thinks Almost Maine is a charming yet realistic play, showing the portrayal of very real relationships in a quaint fictional town.



Sarah Letteer Sarah directed the first ACT, sr play, and it was one that she wrote: "Drama at the Diner". She has been in ACT for all but two productions since 2008. For this production, she is helping Mycala as the Assistant Director.



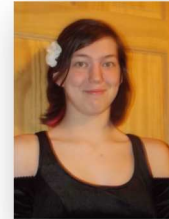
Danny Roush Danny has been in ACT since ACT, sr 2015. He is a rising senior at Briarwood Academy. When he's not acting, he's playing football, debating, singing in quartet, singing in school and church choirs, and working on his 150 acre horse farm.



Angie Wilkerson Angela is 18yo, and studying nursing at Augusta Tech. She has participated in ACT since 12th Night. This will likely be her last ACT performance, as she moves unwillingly towards adulthood.



Lizzie Wilkerson Elizabeth usually only behind the scenes working as stage manager, but for this production she's also performing as two characters. Check out the rest of her bio under the Crew on the next page.



Tori Wilkerson Victoria is a 15yo homeschooled student. She has participated in ACT since 12th Night, and hopes to continue to participate in ACT in the future as her school life becomes more challenging.

ACKNOWLEDGMENTS..

Thank you to Ms. Cindy for allowing me this amazing and unforgettable opportunity and for helping to make it all possible.

Thank you to Jeffrey Fowler and Cindy Rivers for the projection, lights and sound that make the show so magical.

Thank you to my wonderful directional staff for the assistance and additional creativity that make this show so captivating.

Thank you to my lovely cast for working with me through it all and using all of your amazing talents to make this show so beautiful and meaningful. It is everything I could have ever dreamed for and more.

Mycala